

Dear Parent,

There is a variety of free and inexpensive software available on the Internet. This letter gives you step-by-step instructions for downloading and installing one of your child's favorite freebies that we use in CompuChild class. Before you can use these instructions, you need to be able to get onto the Internet, and you need to know what kind of operating system you have on your computer.

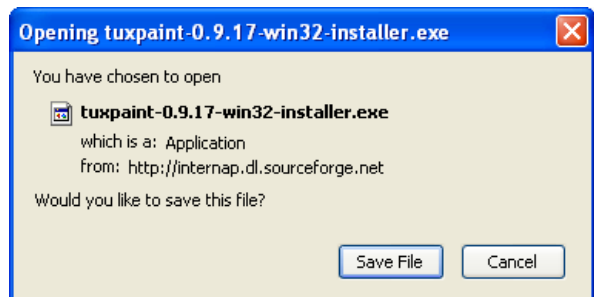
Most people have PCs that run Microsoft Windows. Tux Paint recently was updated to run on newer PCs using the Vista operating system. If you don't know which one you have, try this:

- Right-click on the My Computer icon on your desktop or the My Computer on your Start Menu
- Choose Properties from the action menu that pops up
- On the General tab, it will tell you what kind of system you have (it will tell you one of these: Windows Vista, XP, 2000, ME, NT, 98, or 95)

One more thing before we start: this program is provided for free as a labor of love by volunteers from places all over the world. If you're happy with this Open Source program, please think about making a donation here: <http://www.newbreedsoftware.com/donate/>.

1) Tux Paint is a wonderful free painting program. Ask your child who his buddy Tux is, and he'll probably start making funny noises! This is a free program that anyone can download but it requires two downloads – one for the program itself, and one for the cool stamps. Here are the steps:

- a) Open a browser (Internet Explorer, Netscape, Firefox, Safari, etc) window on your computer once you have connected to the Internet. Go to this page: <http://www.tuxpaint.org/download/>.
- b) Look on the page and you'll see that they offer downloads for a lot of different computer operating systems, including Windows, Mac OS, Linux, and more. You need to click on the one for your computer – probably the Windows version. It will take you to a Download page for Tux Paint for Windows, and you'll see two things listed: Tux Paint & Tux Paint Config, and Rubber Stamps (optional). You are going to want to get them both.
- c) First, click on the link for Tux Paint & Tux Paint Config. As I write this, it's for version 0.9.17, but the number will be different if a newer version becomes available. A notifier window will appear, like the one below. You'll need to save the installer file on your computer.



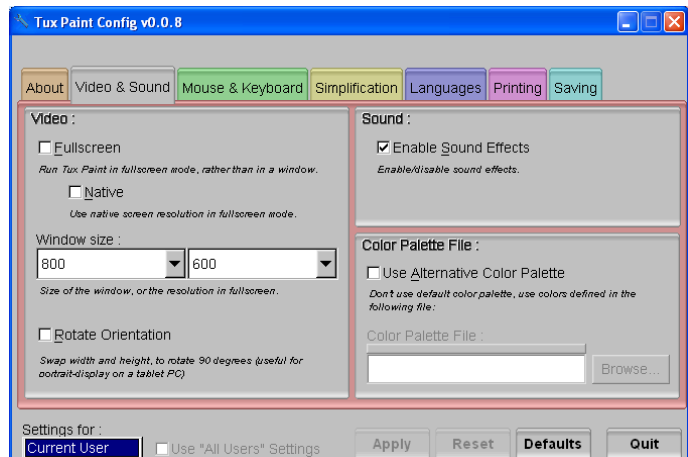
Your computer will put that installer file where it always puts things you download.

You might use your desktop for this task, or you may have a folder called Downloads, or a folder called My Downloads. If you don't know where your downloads go, you may have to search for it. To do this, open a Windows Explorer window and use your search capability to locate a file with **tuxpaint** in it – that will probably be your installer file.

- d) Next, download the stamps. To do this, you'll use your Back button to return to the Tux Paint download page, and this time, click on the Tux Stamps link. Again, save the file, and it will go to the same location as the first download.
- 2) Once the downloads are complete, you'll need to run both installer files. Run the program installer first, and when that's finished, run the stamps installer.
- a) To start the program installer, double-click on it. You'll be asked to select a language, and it will default to English, but you can certainly choose another if you wish.

- b) It is suggested that you close all other open programs before continuing with your installation. This is a standard practice when installing software. You'll also be asked to accept the license agreement before you continue the installation.
- c) I suggest that you install the program for all users. That way, if you have more than one user account on your computer, anyone can use the program.
- d) You'll be asked to confirm where the program will be put. In general, when programs are installed on a Windows computer, they are put into the Program Files folder, in a new folder created just for that program or just for that company. You don't have to keep that suggested folder, but unless you're an advanced computer user, it's probably the best place to install it. Click the Next button to confirm and continue.
- e) You'll be asked to confirm the shortcut link that will be added to your Start Menu. Again, you can change this if you know how.
- f) And you'll be asked if you want to create an icon for Tux Paint on the desktop. We don't use a lot of desktop icons in CompuChild class. I prefer to teach children to use the Start Menu so that they reinforce that skill on a frequent basis, so our favorite programs are pinned to the Start Menu so that they're easy to find there. But your child either has learned or will learn how to start a program by double-clicking on a desktop icon, so it's up to you whether you want to use one.
- g) Then you'll be asked to confirm where things will go, and start the installation. The last step of the installation will be to view the Readme file (if you want), and to launch the Tux Paint Config utility. You can run the config utility at another time, but I recommend you do it now so you don't forget.

The config window will open (it's shown here) and allow you to make decisions about how this program should be used on your computer. I'd like to suggest the following:



1. Make changes for all users, not just the current user. You can do this using the pulldown list in the lower left corner of the window.
2. On the Video and Sound tab, I recommend that you choose the Fullscreen option for younger children. You can always change this later, but the Fullscreen option means that the taskbar (including the Start button), and other windows, will not be visible while the program is running. You can still switch to other programs while Tux Paint is running by using the ALT-Tab switching trick, but the child will have Tux Paint open on the entire screen when it's running, maximizing the picture for more fun. You can also set the configuration to use the display resolution you've got set for your monitor, or you can set the screen resolution yourself. If you choose to set the resolution manually, remember that smaller numbers mean bigger images. I would also enable the sound effects – this is one of their favorite things about this program. Click the Apply button.
3. On the Mouse and Keyboard tab, I recommend using the Fancy Cursor Shapes. Your child knows that Pointer is always Pointer, even when it changes shape, and this option permits Pointer to use a lot of different shapes. Using the keyboard shortcuts is up to you – we don't use them in class for most students. If your mouse or trackball has a wheel, you may wish to enable mouse wheel support. With Fullscreen display, there is no real need to grab the mouse pointer. And because we learn in class that the left-click and right-click buttons have different jobs, you don't need to click enable the "no button distinction" option. Again, click Apply if you've made any changes.
4. On the Languages tab, we load the system fonts. So far, we haven't noticed a problem with this option. If you choose to use this option, don't forget to click Apply before continuing.

- ☞ On the Printing tab, set the options that work for you. We usually don't have a printer in class, so this isn't an issue for us. Please keep in mind that these pictures are colorful – if you permit your child to print everything he or she creates, you'll need to keep spare ink on hand! Again, click Apply before continuing.
 - ☞ On the Saving tab, I suggest you choose the option to begin with a blank canvas. You can also choose other options on this tab, including where you want Tux Paint to save your child's pictures. Be aware that you can end up with a lot of stuff on your hard drive if you choose certain options. Finally, click Apply. Quit when finished.
- 3) The last step is to install the Tux Stamps. The program can be used without them but is much more fun with them. Follow these steps:
- a) Return to the folder where you saved the downloaded Stamps installer file, and run it.
 - b) Again, choose the language you want to use, and click the OK button.
 - c) Again, the installation wizard will urge you to close all other programs for the installation.
 - d) Again, you'll be asked to accept the licensing agreement for the stamps.
 - e) Again, you'll be asked whether this is for all users or just you.
 - f) Again, you'll be asked to select the location where they should be installed. If you used the suggested folder the first time, this will be the same place. If you changed the folder the first time, make sure you change it again to the same place you used before.
 - g) When you click the Next button, you'll be asked to select the components to be installed. By default, it will suggest a full installation, and this is best if you want your child to have full access to the stamps. Click the Next button to continue.
 - h) Again, you'll be asked about the shortcut for the Start Menu. Repeat what you did when you installed the program.
 - i) Confirm your installation choices, and click the Install button.
 - j) When finished, Tux Paint is ready to use.

There is online help for parents on this page: <http://www.tuxpaint.org/docs/>. Here, you can read about things you can do with the program to increase your child's fun, as well as things you should know to configure it for optimal use.

We hope you enjoy this program with your child.

Sincerely,

Robin Gardner
Your RI CompuChild USA Program Director